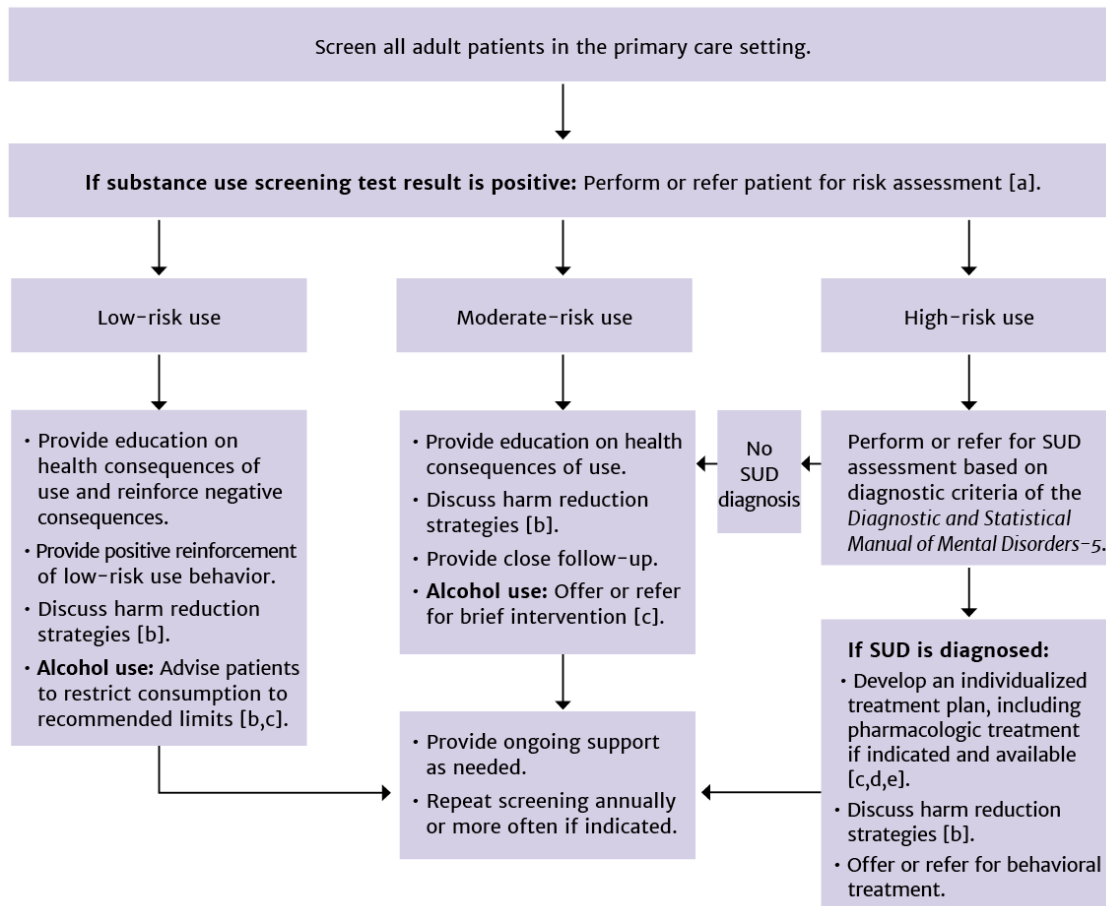




Substance Use Screening and Risk Assessment in Adults

October 2020

Figure 1. Substance Use Identification and Risk Assessment in Primary Care



Notes:

- For patients with a known history of SUD or overdose, screening may not be required but assessment is recommended.
- See the NYSDOH AI guideline *Harm Reduction Approach to Treatment of All Substance Use Disorders*.
- See the NYSDOH AI guideline *Treatment of Alcohol Use Disorder and Helping Patients Who Drink Too Much: A Clinician's Guide* [NIAAA 2016].
- See the NYSDOH AI guideline *Treatment of Opioid Use Disorder*.
- See *A Clinical Practice Guideline for Treating Tobacco Use and Dependence: 2008 Update. A U.S. Public Health Service Report* [USPHS 2008].

References

- NIAAA. National Institute of Alcohol Abuse and Alcoholism/National Institute of Health (NIH). Helping patients who drink too much: A clinician's guide. 2016 Jul. <https://pubs.niaaa.nih.gov/publications/practitioner/cliniciansguide2005/guide.pdf> [accessed 2020 May 6]
- USPHS. A U.S. Public Health Service report: A clinical practice guideline for treating tobacco use and dependence. *Am J Prev Med* 2008;35(2):158-176. [PMID: 18617085] <https://pubmed.ncbi.nlm.nih.gov/18617085>