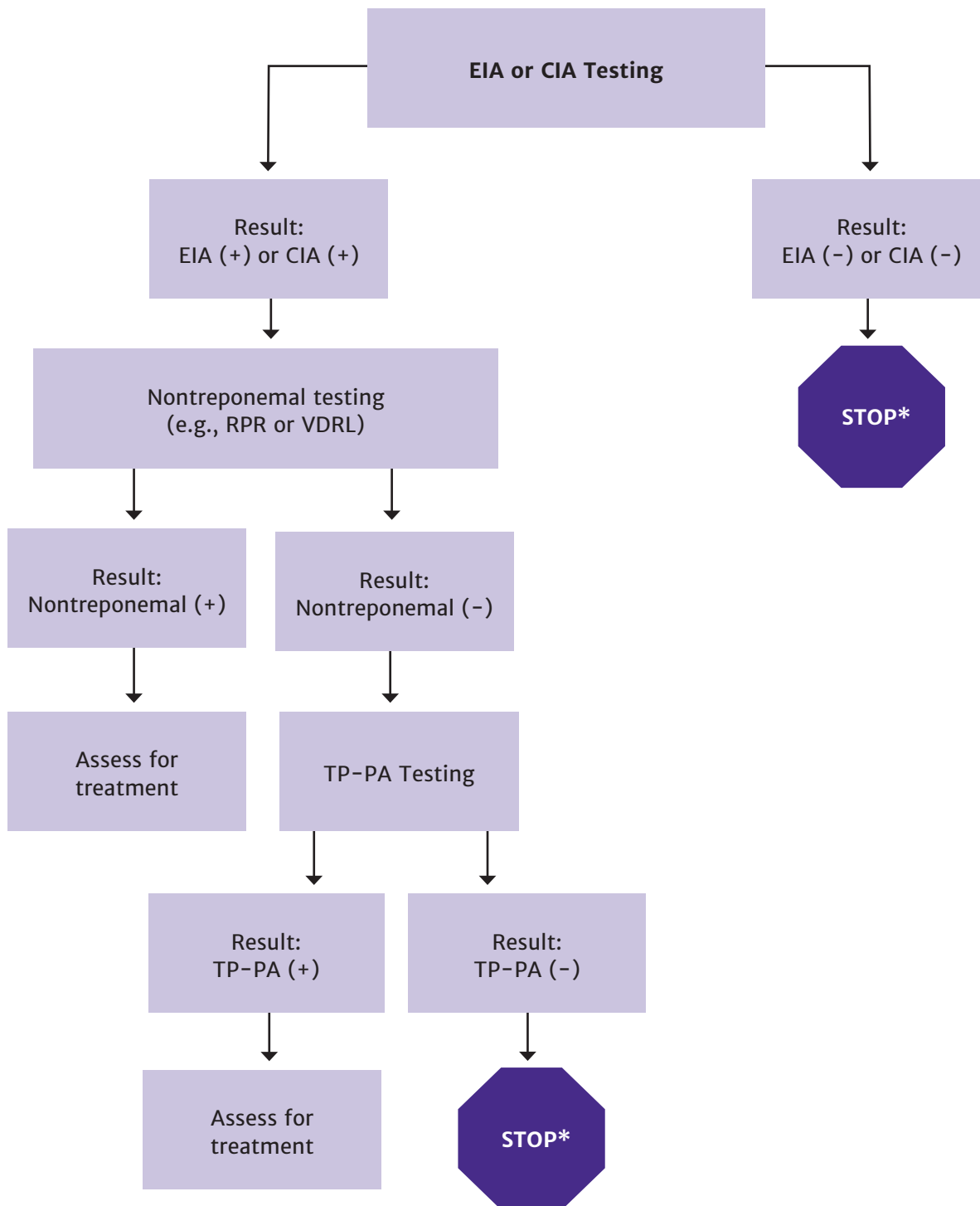


Figure 4. Alternative, Reverse Algorithm for Syphilis Screening and Diagnosis

[CDC 2011; AIDSinfo 2017]



Key: CIA, chemiluminescence immunoassay; EIA, enzyme immunoassay; RPR, rapid plasma reagin; TP-PA, *T. pallidum* particle agglutination; VDRL, venereal disease research laboratory.

*Result may be false-negative; consider alternative treponemal test if clinical suspicion is high.